



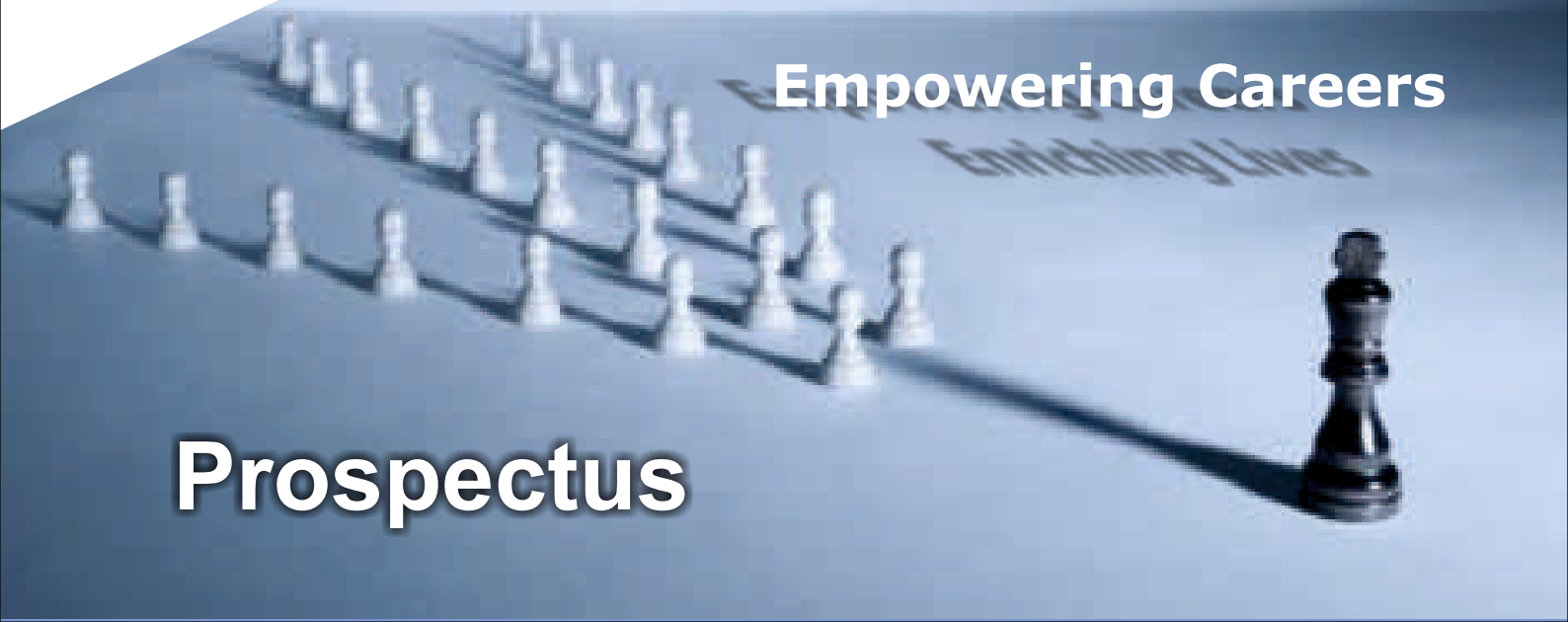
NORTH EAST FRONTIER TECHNICAL UNIVERSITY

(State Private Technical University Established under sec. 2F of UGC Act, 1956)
(Vide Notification No. LAW/LEGN/9-2014 Govt. of Arunachal Pradesh)

A Centre of diverse
and Creative Education

Empowering Careers

Prospectus







NORTH EAST FRONTIER TECHNICAL UNIVERSITY (NEFTU)

(State Private Technical University Established under sec. 2F of UGC Act, 1956)
(Vide Notification No. LAW/LEGN/9-2014 Govt. of Arunachal Pradesh)

A Centre of diverse
and Creative Education

NEFTU



Real education enhances the dignity of a human being and increases his or her self-respect. If only the real sense of education could be realized by each individual and carried forward in every field of human activity, the world will be so much a better place to live in.

— **A. P. J. Abdul Kalam**

INDEX

Sl.No.	Content	Page No.
1	Visitor of The University	1
2	Former Chief Minister's Message	2
3	Chancellor's Message	3
4	Pro-chancellor's Message	4
5	Vice Chancellor's Message	5
6	Force Behind The Mission & Board of Governors	6
7	About Arunachal Pradesh	7
8	About Sponsoring Body	8
9	About North East Frontier Technical University	9
10	Mission And Vision	10
11	Objectives of The University	11
12	University Academics Programmes	12
13	Faculty of Engineering & Technology	13
14	Faculty of Arts	14
15	Faculty of Commerce & Management	15
16	Faculty of Science	17
17	Faculty of Allied Health Sciences	19
18	Faculty of Law	20
19	Faculty of Pharmacy	21
20	Infrastructure Facilities	22
21	Learning And Teaching	23
22	Admission Procedure	24
23	Anti-Ragging Policy - Anti-sexual Policy	25
24	NEFTU Policy - Right To Information	26





*His Excellency Shri. Jyoti Prasad Rajkhowa
Governor of Arunachal Pradesh*



FORMER CHIEF MINISTER'S MESSAGE

NABAM TUKI
CHIEF MINISTER



ARUNACHAL PRADESH
Phone : (O) 0360 - 2212456
2212173
2212341
Fax : 0360 - 2212579
2211467
Delhi : 011-23013915
23012152

MESSAGE

With education today's youths are more empowered and in a better place to decide the course of our world. At the same time, it is a fact that not all youths, especially in rural Arunachal Pradesh, are as empowered as their peers in urban areas. Unemployment, on the other hand, has also shattered the dreams of many youths forcing them to stray away. In such a backdrop, the endeavour of The Automobile Society, India to establish the North East Frontier Technical University (NEFTU), the first ever technical university in Arunachal Pradesh is not only praiseworthy but timely and historic.

The State Government is committed to provide technical education to our youths as the Power Projects - starting in next couple of years in the state - would require technical professionals. The establishment of NEFTU, is in fact a shot in the arm of the Government in fulfilling the commitment by offering technical education to our youths at their doorstep. On behalf of the entire State, I appreciate the endeavour of The Automobile Society and extend our gratitude. The University, I sincerely believe, would live up to the expectations in empowering our youths with technical knowledge and expertise.

My heartiest congratulations and wishes to Mr Dileep K Nair, Founder and Chairman of The Automobile Society, India, and his entire team – Mr Rakesh Dahiya, Mr Vijayarajan, Mr Kuldeep CP and Mr Vijay Jindal – for this earnest effort. I hope in the next few years NEFTU will become the nerve-center of change in our youths upon whom the future of our state and the country depends.

With best wishes!

(Nabam Tuki)



Shri Nabam Tuki
Former Chief Minister



CHANCELLOR'S MESSAGE

I welcome and congratulate you all for choosing NEFTU for admission in various courses. You at NEFTU will find a vast difference in teaching and learning various skills along with subject teaching. We, at NEFTU strongly value partnership with business, employers as well as work together to enhance the community's social, environment and economic well-being, either through research, development or by providing the students with skills for better employability. We play a distinctive role in furthering the nation's social, cultural, business and economic development.

We are committed to promote academic excellence and socially relevant education. The University has made all out efforts to meet national and global structure. In short span of existence the University is moving towards and becoming a "centre of Excellence"

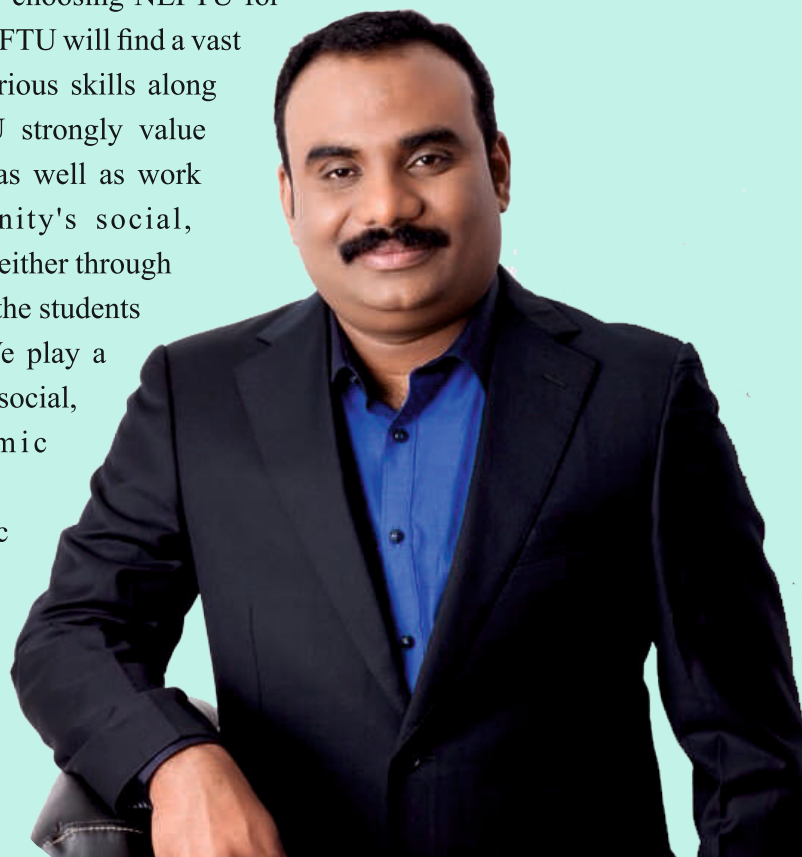
NEFTU collaboration with local community is serving an economic engine.

By community building, human capital and brain power we are committed to and are focused on educating leaders who will make positive contribution to our society.

Helping to achieve this aim, our state of art infrastructure, picturesque and inspiring setting, devoted team of faculty members and administration, we provide education which will be the need of business and enhance employability, and all round growth and academic excellence.

I invite you to prepare yourself for the opportunities for the new millennium at our University with the mix of academic inputs, open mindedness and focused set up.

Once again welcome you to the holiest learning experience.



*With love and regards
Your sincerely*

Dileep K. Nair

*Chairman and Founder - The Automobile Society (India)
Chancellor - NEFTU*



PRO-CHANCELLOR'S MESSAGE



“Take one step, we'll take two”
With this assurance, I at North East Frontier Technical University welcome you all to a lucrative journey towards learning and employment. North East Frontier Technical University brings together world-class experts to provide education in its truest sense to each and every student. We are leaving no stone unturned in developing new ideas and promoting lasting knowledge.

We are creating an academic environment where outstanding students and scholars from around the world can be inspired to excel in their programs of study and research. Nevertheless, NEFTU's aim is not only to create qualified professionals but also to raise the standard of education by giving impetus to their holistic development. We also provide a range of key social and economic initiatives that benefit the community at large. This ranges from providing services and funding research that enhances the health and well-being of the community to assisting students from low socio-economic backgrounds to qualify for higher education, thereby generating significant employment opportunities for the region and stimulate economic development for future generation. I hope you are inspired by our vision, and the opportunity to join us in our quest to become India's most distinctive

Rakesh Dahiya
Pro-Chancellor

VICE CHANCELLOR'S MESSAGE



We, at North East Frontier Technical University, have a long and proud tradition as a distinguished education provider of excellence. It is from this strong foundation and experience in learning and teaching that we grow and shape our future. We continue to invest in our student's experience, developing and expanding our range of academic programs, ensuring the high quality of our curriculum and its delivery provides our students with the skills for life and work in a global economy. We believe our success lies in our passion for teaching and learning and our commitment to our students. The University aims to create a learner centric environment and a learning experience for all our participants, an experience that impacts their careers and their lives.

Prof. Lalit Kumar Sagar
Vice Chancellor



FORCE BEHIND THE MISSION



Dileep K Nair
Chairman - Sponsoring Body
Chancellor - NEFTU



Rakesh Dahiya
Pro-Chancellor - NEFTU



Thadathil Vijayarajan
General Secretary
Sponsoring Body



Vijay Jindal
Director & Trustee
Sponsoring Body



Kuldeep Patil
Director & Trustee
Sponsoring Body

BOARD OF GOVERNORS

Dileep K Nair
Chairman - Sponsoring Body
Chancellor NEFTU

Prof. Lalit Kumar Sagar
Vice-Chancellor NEFTU

Vijay Jindal
Director & Trustee - Sponsoring Body

Prof. Suraj Prakash Batra
Registrar - NEFTU
Ex. Officio Secretary

Thadathil Vijayarajan
General Secretary - Sponsoring Body

Dr. Tejum Padu
Director DHTE
Eminent Educationist Nominated by
Govt of Arunachal Pradesh

Kuldeep Patil
Director & Trustee - Sponsoring Body

Harish Chandra Bhatia
Eminent Educationist Nominated
By Sponsoring Body

Development Commissioner (Finance)
Govt of Arunachal Pradesh
Nominee of
Govt of Arunachal Pradesh

ABOUT ARUNACHAL PRADESH



Arunachal Pradesh attained its statehood on 20th February 1987. It is situated in the North-Eastern part of India with 83743 sq. kms area and has a long international border with Bhutan to the west (160 km), China to the north and north-east (1,080 km) and Myanmar to the east (440 km). It stretches from snow-capped mountains in the north to the plains of Brahmaputra valley in the south. Arunachal is the

largest state area-wise in the north-east region, even larger than Assam which is the most populous. It is situated between latitude $26^{\circ} 30' N$ and $29^{\circ} 30' N$ and longitude $91^{\circ} 30' E$ and $97^{\circ} 30' E$.

Itanagar is the capital of Arunachal Pradesh and located at an altitude of 530 meters above MSL. It is named after Itafort meaning fort of bricks built in 14th century A.D.

The widely scattered archeological remains at different places in Arunachal bears testimony to its rich cultural heritage. Arunachal Pradesh, a serene land tucked into the North Eastern tip of India, invites you to relax in its picturesque hills and Valleys, enjoy its salubrious climate and meet its simple and hospitable people, with their glorious heritage of arts and crafts and colorful festivals that reflect their ancient faith in the inexorable power of nature. The state provides abundant scope for angling, boating, rafting, trekking and hiking. Besides, there are a number of wild life sanctuaries and national parks where rare animals, birds and plants will fascinate the visitors. Nature has provided the people with a deep sense of beauty which finds delightful expressions in their songs, dances and crafts. The climate varies from hot and humid to heavy rainfall in the Chivalric range. It becomes progressively cold as one moves northwards to higher altitudes. Trees of great size, plentiful climbers and abundance of cane and bamboo make Arunachal evergreen. Arunachal Pradesh is considered to be the nature's treasure trove and home to orchids, known for their exquisitely beautiful blooms, from one of the dominant taxa with more than six hundred species, occurring in varying elevations and climatic conditions throughout the state.

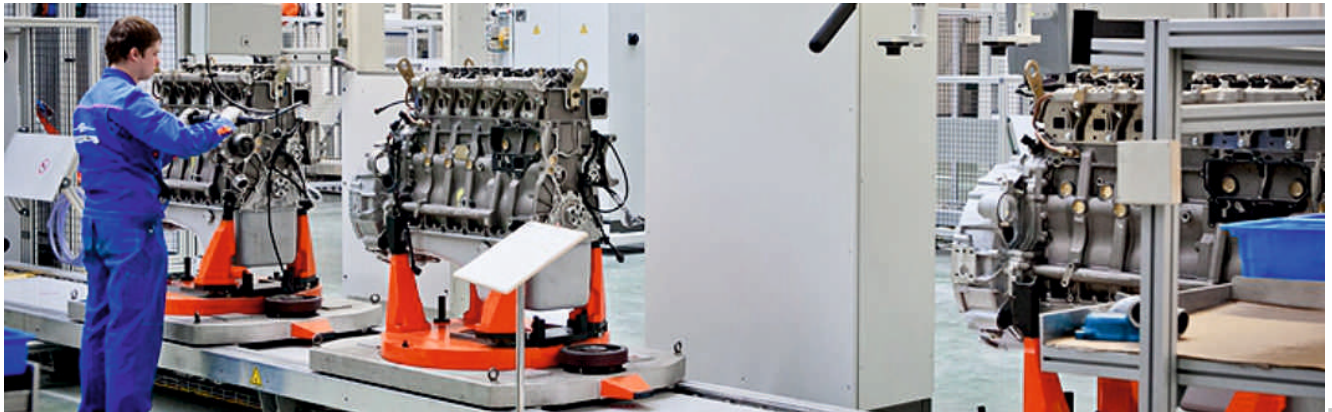


ABOUT SPONSORING BODY

The Automobile Society India is a registered society in Bangalore pioneering the cause of improving the career opportunities for the automotive engineers in India. The society consists of renowned academicians, members from the automotive industry & various faculty members of different Automobile Engineering institutions. It's a professional organization looking after the interests of the Automotive Engineers who are engaged in the Automobile field. It was established to work towards the welfare of the automobile engineers in India. In the recent times, the society has been striving hard to ensure further education and opportunity to improve upon the portfolio of the members and help them improve the career prospects. The members of the society learn and excel with the different initiatives taken up by the society directed towards the improvement of the career graphs of the automobile engineers who are part of our society. We work towards offering them with best of the opportunities and learning platforms to enhance their skills and knowledge base for sharpening their futuristic goals. The Automobile society will provide its members with further education and opportunity to enhance their existing automobile knowledge base. It will be a dynamic two-way procedure helping the members to harness their skills through a chain of workshops, symposiums, and congresses that will be held by other member societies worldwide and local.

ASI Promotes the institution in the field of automobile and electrical engineering with the name of

- Institute of Automobile Engineers India (IAEI)
- Institute of Electrical Engineers India (IEEI)



Membership & Associations

- National Skill Development Corporation (NSDC)
- Quality Council of India (QCI)
- Engineering Council of India (ECI)
- Automotive Research Association of India (ARAI)
- ASSOCHAM
- Confederation of Indian Industry (CII)
- Automotive Component Manufacturers Association of India (ACMA)
- Airport Authority of India (AAI)

ABOUT NORTH EAST FRONTIER TECHNICAL UNIVERSITY



*Education is The Manifestation of
The Perfection Already in Man
– Swami Vivekananda*



North East Frontier Technical University (NEFTU) is an earnest endeavor by a group of visionaries and educationalists in the variant sectors of education that strives to create a center of diverse and creative education. It brings to its students world class study environment that caters to all the educative and informative needs of the future of this country. We, overwhelmingly plan to strengthen this sector by fulfilling and introducing the paramount needs of the pupils in order to reach the dizzy heights of success.

North East Frontier Technical University (NEFTU) a State Private University established under section 2F of UGC Act, is well versed to facilitate the students with quality education and higher study programs of national and international standards. Organizing a group of well-qualified, highly charismatic and experienced faculties along with a wide array of amenities for our students portrays our desire to offer the best form of education.

We initiate by offering a wide range of programs at different levels from graduate, post graduate to doctorate as well. Learning aids and advanced skillset have been made available for all the diverse streams ranging from technical to management, literature to science.

It is the constant aim of NEFTU to incorporate features of excellence in its campus. Every effort is being made wholeheartedly to produce fruitful adults who are employable. We strive hard to serve as an exemplary role model for other educational institutions across the country



MISSION

The mission of NEFTU is to provide quality education, creative skills and instill in them a professional attitude so that they emerge as highly successful professionals. NEFTU is committed to foster leadership quality amongst its students.



“Don't take rest after your first victory because if you fail in second, more lips are waiting to say that your first victory was just luck.”
— **A.P.J Abdul Kalam**



VISION

North East Frontier Technical University is dedicated to chisel the students with futuristic quality education to be at par with global standards, yet ethically strong, entwined with values and discipline and to build mutual reputation through the smart students who in turn will improve the quality of life globally.

OBJECTIVES OF THE UNIVERSITY:

The aims and objectives of this university which follows the spirit of the Act. are outlined as below:

- To provide for instructions in emerging areas of higher education and to make provisions for research and advancement as well as dissemination of knowledge and skills.
- To nourish, nurture and promote holistic higher education with focus on professional and skilled based education; with a view to achieve symbiosis between intellectual pursuit local, social, national as well as international needs.
- To promote research based degree programs as compared to international norms and standards, the university commits “center for excellence” in innovation in higher education.
- To organize and undertake future studies and international seminars and conferences.
- To enhance the potential of information & communication technology, including web conference, Tele-conference, Mobile technology, Skype technology as well as satellite technology for effective and cost effective education and to meet the local and social needs.
- To provide for instructions through face to face, open and distance learning 'open approach' and for mobility of students from the non-formal stream to the formal stream.
- Through collaboration with international universities, institute of national importance, industry, research & development centers, institutions of higher learning in India and abroad, for the purpose of teaching, research, and technology transfer and allied activities will be established.



*“You can never be overdressed or overeducated.”
— Oscar Wilde*



UNIVERSITY ACADEMICS PROGRAMMES

The University promote studies in the emerging areas of higher education like Engineering, Technology, Business Studies, Education, Pharmacy, Law, Health Education, Computer Applications and Environment Management etc. In order to achieve this aim, the University is teaching programmes in various faculty in the University Campus which is established for teaching, research and innovation in their respective areas. The University covers all dimensions of areas of education.

NEFTU, through cross-discipline programming, innovative course design, diverse experiential learning and supportive community environment, provides to its students the education they need to have big ideas and endless career opportunities.

NEFTU, through principles of excellence, equality and opportunity for all, has become one of the world's leading universities, carving out a reputation as an academic powerhouse where a clear focus on excellence has secured national and international recognition.

NEFTU, offers from its dedicated teaching that meets the highest standards of excellence, to conducting research that breaks new ground, and to providing services, solutions, and clinical care that help individuals and the local, national, and global communities where they live.

- FACULTY OF ENGINEERING & TECHNOLOGY
- FACULTY OF ARTS
- FACULTY OF COMMERCE & MANAGEMENT
- FACULTY OF SCIENCE
- FACULTY OF ALLIED HEALTH SCIENCES
- FACULTY OF LAW
- FACULTY OF PHARMACY



FACULTY OF ENGINEERING & TECHNOLOGY

In order to build up highly qualified engineering, scientific and technical personnel, who can develop innovative solutions to meet the needs of 21st century, with emphasis on employability skills, we offer an array of programmes in the faculty of engineering and technology.



Programmes Offered

No	NAME OF THE PROGRAMME	MODE	DURATION	ELIGIBILITY
1	CERTIFICATE : - MECHANIC -(REFRIGERATION & AIR - CONDITIONING)/ DRAUGHTSMAN/ MECHANICAL/ CIVIL/ ELECTRICIAN/ FITTER/ TURNER/ MACHINIST/ MECHANIC (DIESEL/ TRACTOR)/ PLUMBER/ WELDER (GAS & ELECTRIC)/ PAINTER/ CARPENTER/ MASON (RAJMISTRI)	SEM	1 SEM	10th
2	DIPLOMA : - MECHANIC -(REFRIGERATION & AIR - CONDITIONING)/ DRAUGHTSMAN/ MECHANICAL/ CIVIL/ ELECTRICIAN/ FITTER/ TURNER/ MACHINIST/ MECHANIC (DIESEL/ TRACTOR)/ PLUMBER/ WELDER (GAS & ELECTRIC)/ PAINTER/ CARPENTER/ MASON (RAJ MISTRI)	SEM	2 SEM	10+2
3	DIPLOMA IN ENGINEERING :- AUTOMOBILE/ CIVIL/ COMPUTER SCIENCE/ ELECTRONICS & COMMUNICATION/ ELECTRICAL/ MECHANICAL	SEM	6 SEM	10th
4	DIPLOMA IN ENGINEERING (LATERAL ENTRY INTO SEM III): - AUTOMOBILE/ CIVIL/ COMPUTER SCIENCE/ ELECTRONICS & COMMUNICATION/ ELECTRICAL/ MECHANICAL	SEM	4 SEM	ITI/ 10+2 WITH PCM/ VOC ENGG.
5	BACHELOR OF TECHNOLOGY: - AERONAUTICAL/ AUTOMOBILE/ CIVIL/ COMPUTER SCIENCE/ ELECTRONICS & COMMUNICATION/ ELECTRICAL/ MECHANICAL/ INFORMATION TECHNOLOGY/ BIOTECHNOLOGY	SEM	8 SEM	10 +2 (PCM)/ VOC ENGG.
6	BACHELOR OF TECHNOLOGY (LATERAL ENTRY INTO SEM III): - AERONAUTICAL/ AUTOMOBILE/ CIVIL/ COMPUTER SCIENCE/ ELECTRONICS & COMMUNICATION/ ELECTRICAL/ MECHANICAL/ INFORMATION TECHNOLOGY/ BIOTECHNOLOGY	SEM	6 SEM	ENGG. DIPLOMA/ B.Sc. IN RELEVANT STREAM
7	MASTER OF TECHNOLOGY : - AERONAUTICAL/ CIVIL/ ELECTRICAL/ MECHANICAL/ COMPUTER SCIENCE	SEM	4 SEM	B. Tech./ M.Sc. IN RELEVANT STREAM
8	Ph.D.: - CIVIL/ MECHANICAL/ ELECTRICAL/ COMPUTER SCIENCE/ ELECTRONICS & COMMUNICATION	YEAR	2 YEARS	PG IN RELEVANT STREAM



To develop in students, the aesthetics and ethics of life along with the professional streams and to strengthen their approach towards striking a balance between a technology and human values, we offer an array of programmes in the faculty of arts.



Programmes Offered

No	NAME OF THE PROGRAMME	MODE	DURATION	ELIGIBILITY
1	DIPLOMA : - NURSERY TEACHERS TRAINING/ FINE ARTS/ JOURNALISM & MASS COMMUNICATION	SEM	2 SEM	10+2
3	DIPLOMA : - PRIMARY TEACHERS TRAINING/ ARTS CRAFTS	SEM	4 SEM	10+2
4	BACHELOR OF ARTS (GENERAL)	SEM	6 SEM	10+2
5	BACHELOR OF ARTS (HONOURS): - ENGLISH/ HINDI/ PSYCHOLOGY/ HISTORY/ POLITICAL SCIENCE/ PUBLIC ADMIN/ SOCIOLOGY/ ECONOMICS/ MATHS/ SANSKRIT/ PHYSICAL EDUCATION/ DRAWING & PAINTING/ GEOGRAPHY	SEM	6 SEM	10+2
6	BACHELOR OF FINE ARTS	SEM	8 SEM	10+2
7	BACHELOR OF SOCIAL WORK	SEM	6 SEM	10+2
8	BACHELOR OF ARTS (JOURNALISM & MASS COMMUNICATION)	SEM	6 SEM	10+2
9	MASTER OF ARTS : - HISTORY/ SOCIAL SCIENCE/ SANSKRIT/ HINDI/ SOCIOLOGY/ PSYCHOLOGY/ GEOGRAPHY/ DRAWING & PAINTING/ ECONOMICS/ POLITICAL SCIENCE/ ENGLISH/ PUBLIC ADMIN/ MATHS/ EDUCATION	SEM	4 SEM	GRADUATION
11	MASTER OF SOCIAL WORK	SEM	4 SEM	GRADUATION
12	MASTER OF FINE ARTS	SEM	4 SEM	GRADUATION
13	MASTER OF ARTS (JOURNALISM & MASS COMMUNICATION)	SEM	4 SEM	BJMC/BA (JMC)
14	M.Phil. :- HINDI/ ENGLISH/ POLITICAL SCIENCE/ HISTORY/ ECONOMICS/ GEOGRAPHY/ EDUCATION/ PHYSICAL EDUCATION/ SOCIOLOGY/ HOME SCIENCE/ SOCIAL WORK	YEAR	1 YEAR	PG IN RELEVANT STREAM
15	Ph.D. :- HINDI/ ENGLISH/ POLITICAL SCIENCE/ HISTORY/ ECONOMICS/ GEOGRAPHY/ EDUCATION/ PHYSICAL EDUCATION/ SOCIOLOGY/ HOME SCIENCE/ SOCIAL WORK	YEAR	2 YEARS	PG IN RELEVANT STREAM



“The world is a book and those who do not travel read only one page.”
— Augustine of Hippo

FACULTY OF COMMERCE & MANAGEMENT

For intellectually stimulating business administration and management instincts of students that are highly relevant to industry needs, we offer an array of courses in the faculty of management.



Programmes Offered

No	NAME OF THE PROGRAMME	MODE	DURATION	ELIGIBILITY
1	CERTIFICATE : - EVENT MANAGEMENT/ TAXATION/ INVESTMENT & ACCOUNTING/ HOTEL MANAGEMENT/ BAR AND RESTAURANT MANAGEMENT/ FINANCE & ACCOUNTS/ COMPUTER ACCOUNTING/ RETAIL MANAGEMENT/ TRAVEL & TOURISM MANAGEMENT/ BUSINESS MANAGEMENT/ CONSTRUCTION MANAGEMENT/ FINANCIAL PLANNING & WEALTH MANAGEMENT/ INTERIOR DESIGNING/ EXPORT & IMPORT/ RENEWABLE RESOURCES OF ENERGY/ AGRI BUSINESS/ RURAL MANAGEMENT	SEM	1 SEM	10th
2	DIPLOMA : - EVENT MANAGEMENT/ TAXATION/ INVESTMENT & ACCOUNTING/ HOTEL MANAGEMENT/ BAR AND RESTAURANT MANAGEMENT/ FINANCE & ACCOUNTS/ COMPUTER ACCOUNTING/ RETAIL MANAGEMENT/ TRAVEL & TOURISM MANAGEMENT/ BUSINESS MANAGEMENT/ CONSTRUCTION MANAGEMENT/ FINANCIAL PLANNING & WEALTH MANAGEMENT/ INTERIOR DESIGNING/ EXPORT & IMPORT/RURAL MANAGEMENT/ RESOURCES OF ENERGY/ AGRI BUSINESS/ HOSPITALITY MANAGEMENT/ FASHION DESIGN/ TOURISM MANAGEMENT/ CHARTERED FINANCIAL MANAGEMENT	SEM	2 SEM	10+2
3	DIPLOMA IN AVIATION, TOURISM AND HOSPITALITY MANAGEMENT	SEM	2 SEM	10+2
4	DIPLOMA IN HOTEL MANAGEMENT AND CATERING TECHNOLOGY	SEM	2 SEM	10+2
6	BACHELOR OF COMMERCE	SEM	6 SEM	10+2 WITH COMMERCE
7	BACHELOR OF SCIENCE:- HOSPITALITY MANAGEMENT/ FASHION DESIGN/ TOURISM MANAGEMENT	SEM	6 SEM	10+2
8	BACHELOR OF BUSINESS ADMINISTRATION	SEM	6 SEM	10+2
9	BACHELOR OF BUSINESS ADMINISTRATION (INDUSTRY INTEGRATED)	SEM	6 SEM	10+2 WITH 3 YEAR EXP
10	BACHELOR IN AVIATION, TOURISM AND HOSPITALITY MANAGEMENT	SEM	6 SEM	10+2



“Education is the most powerful weapon which you can use to change the world.”
— Nelson Mandela

FACULTY OF COMMERCE & MANAGEMENT



Programmes Offered

NO	NAME OF THE PROGRAMME	MODE	DURATION	ELIGIBILITY
11	BACHELOR OF HOTEL MANAGEMENT AND CATERING TECHNOLOGY	SEM	8 SEM	10+2
12	BACHELOR IN HOSPITAL ADMINISTRATION	SEM	6 SEM	10+2
13	MASTER OF COMMERCE	SEM	4 SEM	GRADUATION IN RELEVANT STREAM
14	MASTER OF BUSINESS ADMINISTRATION : - FINANCE/ MARKETING/ RETAIL/ HUMAN RESOURCE/ IT/ HEALTH CARE/ HOSPITAL MANAGEMENT/ INDUSTRIAL SAFETY/ OPERATION MANAGEMENT/ SUPPLY CHAIN MGMT/ MATERIAL MGMT./ AVIATION MANAGEMENT/ EVENT MANAGEMENT/ SCHOOL MANAGEMENT	SEM	4 SEM	GRADUATION
15	MASTER OF BUSINESS ADMINISTRATION (INDUSTRY INTEGRATED) : - FINANCE/ MARKETING/ RETAIL/ HUMAN RESOURCE/ IT/ HEALTH CARE/ HOSPITAL MANAGEMENT/ INDUSTRIAL SAFETY/ OPERATION MANAGEMENT/ SUPPLY CHAIN MGMT/ MATERIAL MGMT./ AVIATION MANAGEMENT/ EVENT MANAGEMENT/ SCHOOL MANAGEMENT	SEM	4 SEM	GRADUATION WITH 3 YEAR EXP.
16	EXECUTIVE MASTER OF BUSINESS ADMINISTRATION : - FINANCE/ MARKETING/ RETAIL/ HUMAN RESOURCE/ IT/ HEALTH CARE/ HOSPITAL MANAGEMENT/ INDUSTRIAL SAFETY/ OPERATION MANAGEMENT/ SUPPLY CHAIN MGMT/ MATERIAL MGMT./ AVIATION MANAGEMENT/ EVENT MANAGEMENT/ SCHOOL MANAGEMENT	SEM	2 SEM	GRADUATION WITH 3 YEAR EXP.
17	POST GRADUATE DIPLOMA IN BUSINESS MANAGEMENT	SEM	2 SEM	GRADUATION
18	M.Phil. :- COMMERCE/ FINANCE/ MANAGEMENT	YEAR	1 YEAR	PG IN RELEVANT STREAM
19	Ph.D.:- COMMERCE/ FINANCE/ MANAGEMENT	YEAR	2 YEARS	PG IN RELEVANT STREAM

FACULTY OF SCIENCE

To provide a sound foundation for understanding of fundamentals of basic sciences and to infuse an insight for application of these principles in various applied sciences, we offer our diverse range of programmes in the faculty of science,



Programmes Offered

No	NAME OF THE PROGRAMME	MODE	DURATION	ELIGIBILITY
1	CERTIFICATE : - DATA ENTRY OPERATOR/ OFFICE MACHINE OPERATOR/ WEB - DESIGNING/ HARDWARE & NETWORKING/ SOFTWARE TESTING/ COMPUTER APPLICATION/ ANIMATION & MULTIMEDIA/ CLOUD COMPUTING/ INFORMATION TECHNOLOGY/ AGRO PRODUCTS PROCESSING/ CAD CAM/ FIREMAN	SEM	1 SEM	10th
2	DIPLOMA : - DATA ENTRY OPERATOR/ OFFICE MACHINE OPERATOR/ WEB - DESIGNING/ HARDWARE & NETWORKING/ SOFTWARE TESTING/COMPUTER APPLICATION/ ANIMATION & MULTIMEDIA/ CLOUD COMPUTING/ INFORMATION TECHNOLOGY/ AGRO PRODUCTS PROCESSING/ CAD CAM/ LIBRARY & INFORMATION SCIENCE	SEM	2 SEM	10+2
3	DIPLOMA COMPUTER APPLICATION	SEM	2 SEM	10+2
4	DIPLOMA : - FIRE ENGINEERING AND INDUSTRIAL SAFETY MGMT./INDUSTRIAL SAFETY HEALTH AND ENVIRONMENT MANAG EMENT	SEM	2 SEM	10+2
5	POST GRADUATE DIPLOMA : - FIRE ENGINEERING AND INDUSTRIAL SAFETY MGMT./ INDUSTRIAL SAFETY HEALTH AND ENVIRONMENT MANAGEMENT	SEM	2 SEM	GRADUATION
6	POST GRADUATE DIPLOMA COMPUTER APPLICATION	SEM	2 SEM	GRADUATION
7	BACHELOR OF COMPUTER APPLICATION	SEM	6 SEM	10+2
8	BACHELOR OF SCIENCE:- COMPUTER SCIENCE/ INFORMATION TECHNOLOGY	SEM	6 SEM	10+2 (PCM)
9	BACHELOR OF SCIENCE :- AVIATION MANAGEMENT/ FIRE ENGINEERING AND INDUSTRIAL SAFETY MGMT./ INDUSTRIAL SAFETY HEALTH AND ENVIRONMENT MANAGEMENT	SEM	6 SEM	10+2 (PCM)/(PCB)
10	BACHELOR OF SCIENCE (LATERAL ENTRY INTO SEM III): - FIRE ENGINEERING AND INDUSTRIAL SAFETY MGMT./ INDUSTRIAL SAFETY HEALTH AND ENVIRONMENT MANAGEMENT	SEM	4 SEM	10+2 WITH 1 YEAR DIP. IN RELEVANT STREAM



“I did then what I knew how to do. Now that I know better, I do better.”
— **Maya Angelou**



Programmes Offered

No	NAME OF THE PROGRAMME	MODE	DURATION	ELIGIBILITY
11	BACHELOR OF SCIENCE:- PCM/ PCB/ ZBC/ ENVIRONMENTAL SCIENCE/ GEOLOGY	SEM	6 SEM	10+2 (PCM)/(PCB)
12	BACHELOR OF SCIENCE:- AGRICULTURE/ HORTICULTURE	SEM	8 SEM	10+2 (PCB)
14	BACHELOR OF LIBRARY & INFORMATION SCIENCE	SEM	2 SEM	GRADUATION
15	MASTER OF SCIENCE :- COMPUTER SCIENCE/ INFORMATION TECHNOLOGY/ PHYSICS/ CHEMISTRY/ ZOOLOGY/ BOTANY/ MATHS/ AVIATION MANAGEMENT/ AGRICULTURE/ HORTICULTURE/ ENVIRONMENTAL/ GEOLOGY	SEM	4 SEM	B.Sc. IN RELEVANT STREAM
19	MASTER OF LIBRARY & INFORMATION SCIENCE	SEM	2 SEM	B.LIB.I.SC
20	M.Phil. :- PHYSICS/ CHEMISTRY/ ZOOLOGY/ BOTANY/ MATHS/AGRICULTURE/ LIBRARY SCIENCE/ INFORMATION TECHNOLOGY	YEAR	1 YEAR	PG IN RELEVANT STREAM
21	Ph.D.-: PHYSICS/ CHEMISTRY/ ZOOLOGY/ BOTANY/ MATHS/ AGRICULTURE/ LIBRARY SCIENCE/ INFORMATION TECHNOLOGY	YEAR	2 YEARS	PG IN RELEVANT STREAM



FACULTY OF ALLIED HEALTH SCIENCES

We, in our courses incorporate practical skills and knowledge within various allied health disciplines. In order to offer a superb learning environment that enables students to fulfill their potential and ensures our graduates are fit for practice in the modern and ever changing health and social care sector, We offer varied courses in the faculty of allied health sciences

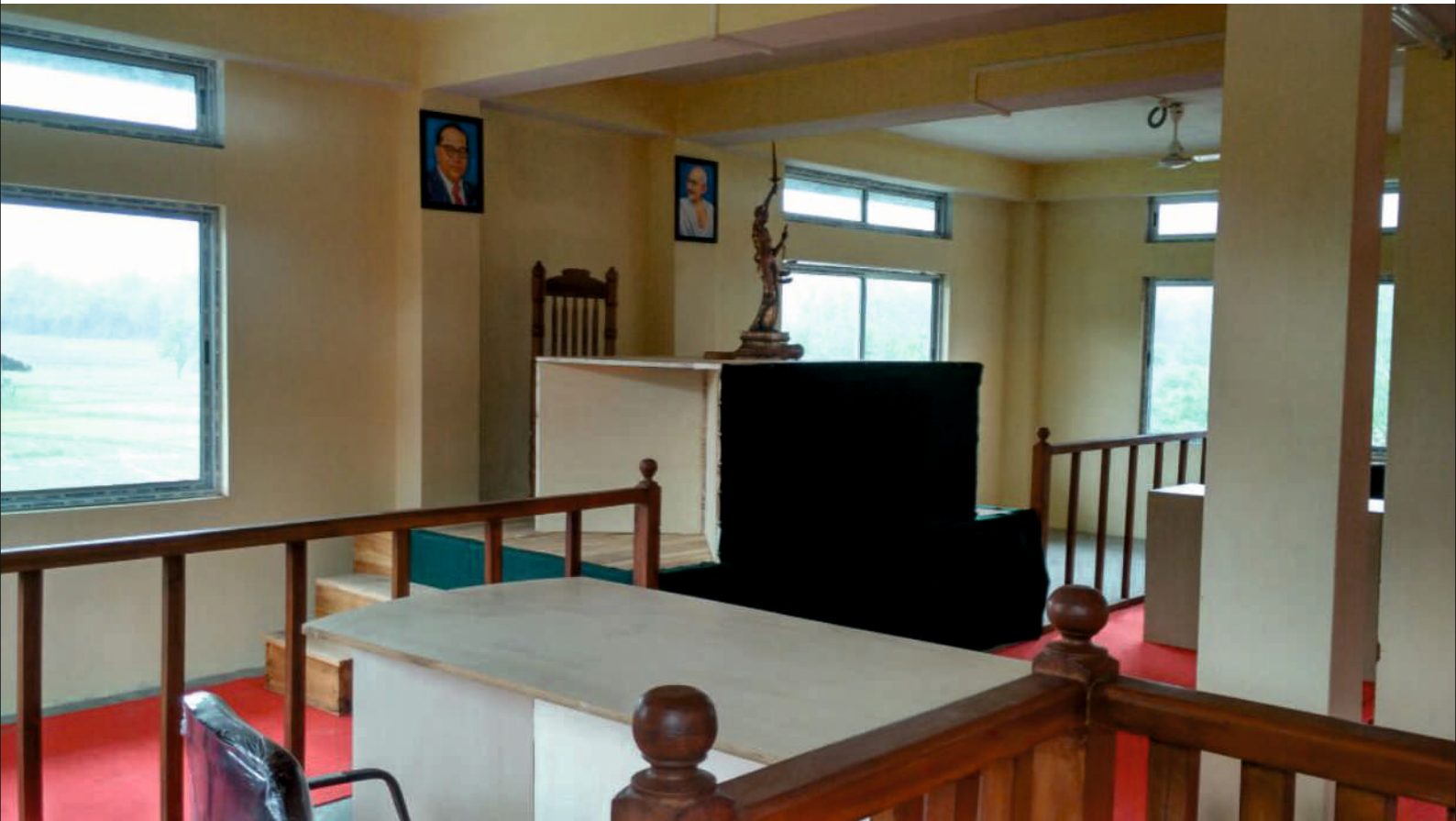


Programmes Offered

No	NAME OF THE PROGRAMME	MODE	DURATION	ELIGIBILITY
1	CERTIFICATE : - MEDICAL LAB TECHNOLOGY (MLT)/ RADIO IMAGING TECHNOLOGY (RIT)/ OPERATION THEATER TECHNOLOGY(OTT)/ CAREGIVER TRAINING/ NURSING ASSISTANT/ PARAMEDICAL/ YOGA AND NATUROPATHY/ PHYSIOTHERAPY/ FOOD NUTRITION & HEALTH	SEM	1 SEM	10th
2	DIPLOMA : - YOGA AND NATUROPATHY/ FOOD NUTRITION & HEALTH/ X -RAY LAB TECHNICIAN	SEM	2 SEM	10th
3	DIPLOMA : - MEDICAL LAB TECHNOLOGY(MLT)/ OPERATION THEATER TECHNOLOGY(OTT)/ RADIO IMAGING TECHNOLOGY (RIT)/ YOGA AND NATUROPATHY/ X -RAY LAB TECHNICIAN/ PHYSIOTHERAPY	SEM	4 SEM	10+2.
4	BACHELOR OF PHYSIOTHERAPY	SEM	8 SEM	10+2 (PCB)
5	BACHELOR OF NATUROPATHY AND YOGIC SCIENCES	SEM	8 SEM	10+2 (PCB)
6	BACHELOR OF SCIENCE :- OPTOMETRY/ MEDICAL LAB TECHNOLOGY(MLT)/ OPERATION THEATER TECHNOLOGY (OTT)/ MICROBIOLOGY/ BIO-CHEMISTRY/ FOOD NUTRITION & HEALTH/ RADIO IMAGING TECHNOLOGY (RIT)	SEM	6 SEM	10+2 (PCB)
7	MULTIPURPOSE HEALTH WORKER	SEM	4 SEM	10th
8	BACHELOR OF PUBLIC HEALTH	SEM	6 SEM	10+2
9	MASTER OF PUBLIC HEALTH	SEM	4 SEM	GRADUATION IN RELEVANT STREAM
10	MASTER OF PHYSIOTHERAPY	SEM	4 SEM	BPT
11	MASTER OF SCIENCE :- MEDICAL LAB TECHNOLOGY (MLT)/ OPERATION THEATER TECHNOLOGY(OTT)/ MICROBIOLOGY/ BIO -CHEMISTRY	SEM	4 SEM	B.Sc. IN RELEVANT STREAM



To provide quality education in legal studies along with necessary input of practical training; to prepare students for a variety of legal and law related careers; to advance the understanding of law through research and writing; to disseminate learning and knowledge of law and legal processes; to study the role of law and legal processes in national development; to provide expert knowledge and analysis to the whole community; and to make law and legal processes efficient instruments of social development, we offer numerous programmes in the faculty of law.



Programmes Offered

No	NAME OF THE PROGRAMME	MODE	DURATION	ELIGIBILITY
1	B.A. LLB (INTEGRATED)	SEM	10 SEM	10+2
2	BACHELOR OF LAW (LLB)	SEM	6 SEM	GRADUATION
3	MASTER OF LAW (LLM)	SEM	2 SEM	LLB
5	Ph.D.(LAW)	YEAR	2 YEARS	PG IN RELEVANT STREAM



“Education is the ability to listen to almost anything without losing your temper or your self-confidence.”
— **Robert Frost**

FACULTY OF PHARMACY

In order to create, transmit, and apply new knowledge based on cutting-edge research in the pharmaceutical, social, and clinical sciences and to enhance the quality of life through improved health for the people of the nation, and the world, we offer an array of courses in the faculty of pharmacy.



Programmes Offered

Sl. No	NAME OF THE PROGRAMME	MODE	DURATION	ELIGIBILITY
1	DIPLOMA IN PHARMACY (D.PHARMA)	SEM	4 SEM	10+2 (SCIENCE)



*“The past has no power over the present moment.”
— Eckhart Tolle*



INFRASTRUCTURE FACILITIES

INTERACTIVE CENTER

A well designed and impressive seminar room for student's integrative activities like group discussion, lectures by visiting, faculty, seminars etc.

LIBRARY

“The ocean of knowledge” the library acts as a backbone to the nurturing menials and the institutions. It is rich and resourceful centre for creative minds. It provides access to current affairs related to global economy and technological inventions to the students. The institution has wide range and rich collection of adequate books. The library subscribes to national and international journals of repute and prominent research publications. The library is computerized and has proper seating arrangements. Each student is provided with library card.

E – LEARNING LIBRARY

The University website has the links of E-Learning Educational resources from where students can enhance their knowledge and skills.



COMPUTER LAB

Computer centre at NEFTU is work oriented open environment generally available in industry. It has well equipped and spacious computer labs to meet the computing needs of students.

CAFETERIA

The students need continuous source of energy which is provided to them from a well-stocked cafeteria, situated on the campus. The students relax and re-energize themselves in serene atmosphere.

SPORTS FACILITIES

Adequate and modern indoor and outdoor recreation facilities have been established for healthy body and mind.

HOSTEL ACCOMMODATION

For outsider students we arrange the separate hostels for boys & girls. The rooms are clean & airy with facility for lighting & fan. Adequate toilet facilities exist. Drinking water is supplied hygienically through aqua-guards. Seats in the hostels are filled on first come first serve basis. If a student opt for hostel, it will be compulsory for him/her to stay in hostel for at least one year.

LEARNING AND TEACHING

In tune with the vision of university the teaching methodology adheres to interactive modes of teaching with emphasis on practical aspects of training. The motive is convergence of academic with overall development. We follow the mode of teaching that is patterned on a mix of following activities.

- Guest lecturers
- Presentation & seminar
- Group discussion
- Personality development program
- Industry orientation

To remove the drudgery of classroom teaching and routine timetable a number of recreational activities form a part the curriculum. Sports meet and competition are organized to enhance the competitive and sports man spirit of students. cultural activities are regularly organized to give the student chance to show case their talents and remove the stage fear and fear of public speaking. Many indoor and outdoor game facilities are also available for students.

Laboratories

NEFTU has peculiarly looked into the importance and relevance of infra structural aspects of any educational institution. Thereby, catering to all the technical and scientific aids for the wide range of courses offered, we present well equipped and sound laboratories.

- Computer Lab
- Physics Lab
- Chemistry Lab
- Electronics Lab
- Electrical Lab
- Survey Lab
- Concrete Lab
- Soil Mechanics Lab
- Fluid Mechanics Lab
- Aircraft Instrument Lab
- Aircraft Electrical Lab
- Pharmaceutics
- Pharmaceutics Chemistry Lab
- Physiology & Pharmacology Lab
- Pharmacognosy Lab
- Pharmacy Lab
- Moot Court



“Give a girl an education and introduce her properly into the world, and ten to one but she has the means of settling well, without further expense to anybody.”
— Jane Austen

ADMISSION PROCEDURE

NEFTU follows the transparent mechanism for its admission procedure. University administer its own entrance test/personal interview and also consider the scores of national and state level entrance examination for the selection. Students can choose the programmes as per their eligibility from the list of courses. The lists of courses are mentioned faculty wise on our website/information brochure.

Procedure for admission:

- Students can download the admission form from the university website or collect directly from the admission department of the university with prescribed fee. For all the courses same admission form is applicable.
- Submit the duly filled application form to the admission department of the university with following documents along with the course fee.
 - Copy of all mark sheets and certificates.
 - Id & address proof
 - Affidavit (available on download section of www.neftu.edu.in)
 - Migration from previous board/university.
 - Four passport size photographs

Credit Transfer/Lateral Entry:

- Lateral entry shall be allowed only in the programmes where the same is specifically mentioned.
- Students who are pursuing programmes from other universities can pursue their remaining part of the programme under the credit transfer scheme of the university.
- Students have to pay lateral/credit transfer fee



ANTI-RAGGING POLICY

we take pride in informing all those desirous of seeking admission, that ragging is absolutely prohibited in the NEFTU and its offices.

What constitutes ragging -- one or more of any of the following acts:

- ▶ Any conduct by any student or students whether by words spoken or written or by an act which has the effect of teasing, treating or handling with rudeness a fresher or any other student;
- ▶ Indulging in rowdy or indiscipline activities by any student or students which causes or is likely to cause annoyance, hardship, physical or psychological harm or to raise fear or apprehension thereof in any fresher or any other student;
- ▶ Asking any student to do any act which are the student will not in the ordinary course do which has the effect of causing or generating a sense of shame, or torment or embarrassment so as to adversely affect the physique or psyche of such fresher or any other student;
- ▶ Any act by a senior student that prevents, disrupts or disturbs the regular academic activity of any student or fresher;
- ▶ Exploiting the services of a fresher or any other student for completing the academic tasks assigned to an individual or a group of students;
- ▶ Any act of financial extortion or forceful expenditure burden put on a fresher or any other student by students;
- ▶ Any act of physical abuse including all variants of it: sexual abuse, stripping, forcing obscene and lewd acts, and gestures, causing bodily harm or any other danger to health or person
- ▶ Any act or abuse by spoken words, e-mails, post, public insults which would also include deriving perverted pleasure, vicarious or sadistic thrill from actively or passively participating in the discomfiture to fresher or any other student;
- ▶ Any act that affects the mental health and self-confidence of a fresher or any other student with or without an intent to derive a sadistic pleasure or showing off power, authority or superiority by a student over any fresher or any other student.
- ▶ All the senior students are advised to guide and treat junior students affectionately. Junior students may contact their chairpersons or other university functionaries like Registrar, Dean, Students Welfare, Chief Warden, Wardens or Chief Security Officer for help and guidance.

Note: Use of Alcohol is strictly prohibited on the University Campus

ANTI SEXUAL POLICY

The NEFTU has been established and is committed itself to provide a congenial and conducive atmosphere in which students, teachers and non-teaching staff can work together in an environment free of violence, harassment, exploitation, and intimidation. This includes all forms of gender violence, sexual harassment, and discrimination on the basis of gender.

The Supreme Court judgment of 1997 makes it obligatory for every employer and other responsible persons to follow the guidelines laid down by the court and to evolve a specific policy to combat sexual harassment in the workplace. Faculties / departments under the ambit of NEFTU will follow the policy of sexual harassment. Based on these, The NEFTU, has made it mandatory for all to adhere to anti sexual policy, for this and anti – sexual harassment cell to be made functional with at least two senior women faculty on the committee



NEFTU POLICY ON Student Conduct & Discipline

The purpose of education is the production of ethically oriented researchers and leaders. This is achieved through disciplining of mind, manners, conduct and behavior of all seekers of knowledge. In the following we provide general rules governing the students conduct and behavior. All students are advised to read them carefully and abide by these instructions, orders, rules and regulations, ethical and moral code in their conduct, behavior and appearance as envisaged in prospectus, periodic notification, directives and instructions issued by university authority and officials, implemented by the teaching staff, class proctors or class seniors (appointed by the university administration) from time to time.

General Conduct:

- Students are expected to live up to the ideals of the NEFT University, seek knowledge, develop tolerance, honesty, hard work and good relationship with colleagues, teachers, staff and public.
- Students shall be regular and punctual in their academic work and carry out the instructions of their teachers, management and staff of the university seriously and willingly.
- Students shall cooperate in the promotion of the atmosphere of peace and orderly behavior on-campus in and outside the University.
- Students shall not be allowed to sing, whistle, hoot, create noise and indulge in any unseemly behavior. No student is allowed to loiter and move aimlessly in and around the academic blocks or sit in areas other than designated for sitting of boys and girls on all campuses.
- All parts of the university buildings, premises shall be kept clean—e.g., walls, fixtures, models, specimens, charts, etc should not be tempered, defaced, mutilated or damaged in any way or form, defaulters will be dealt with severity.
- Students are required to observe strict discipline at all campuses including playgrounds or areas so declared as well as off campus when wearing university ID card and uniform.
- Students should not enter the administrative offices or staff room(s) without permission.
- Students are not allowed to intentionally damage the university property and equipment.
- No gathering or meeting of students will be allowed on the premises of the university without prior permission of the concerned Dean and/or the Vice Chancellor.
- No course will be started if the strength of admitted students is inadequate. In cases of emergency the course will be started with the approval of the Academic Council. The students may get confirmation from the Dean/Director of the Course.
- The information given in this prospectus is not for legal purpose and is subject to change from time to time. The students are instructed to see University web site before filling the application and may personally visit the campus
- The application form and fees structure is inserted in the flap of the Prospectus.



“Do not train a child to learn by force or harshness; but direct them to it by what amuses their minds, so that you may be better able to discover with accuracy the peculiar bent of the genius of each.”

— Plato

RIGHT TO INFORMATION

The NEFTU Information Monitoring Committee has been constituted in the University to enable the public to garner information as per the provisions of the Right to Information Act, 2005, which has, as its goal, imparting transparency and accountability in relation to all public bodies.





A Map of Arunachal Pradesh

Address

North East Frontier Technical University
Campus: Sipu – Puyi, Aalo (P.O),
West Siang (Dist.) AP – 791001
Ph:-03783 222444, 222555
Email:- info@neftu.edu.in, www.neftu.edu.in